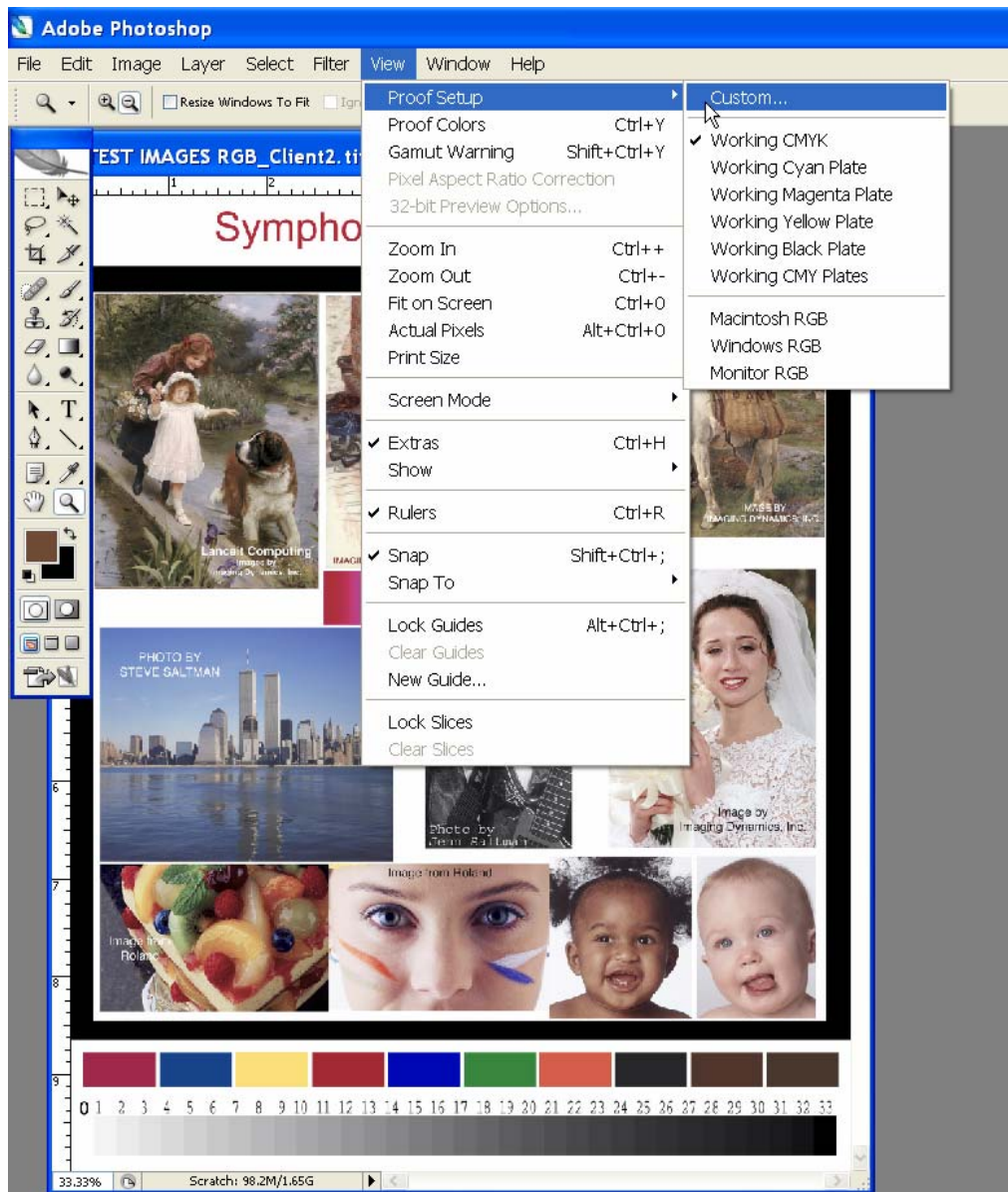
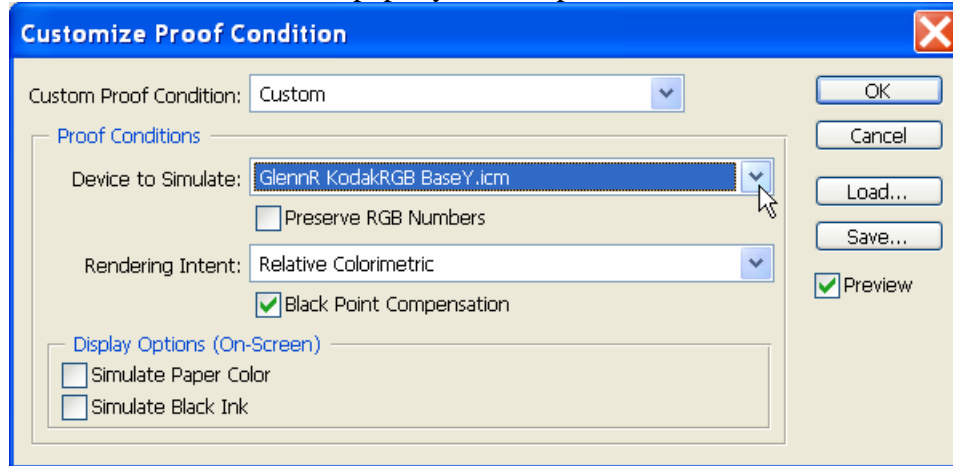


Printing Through Photoshop

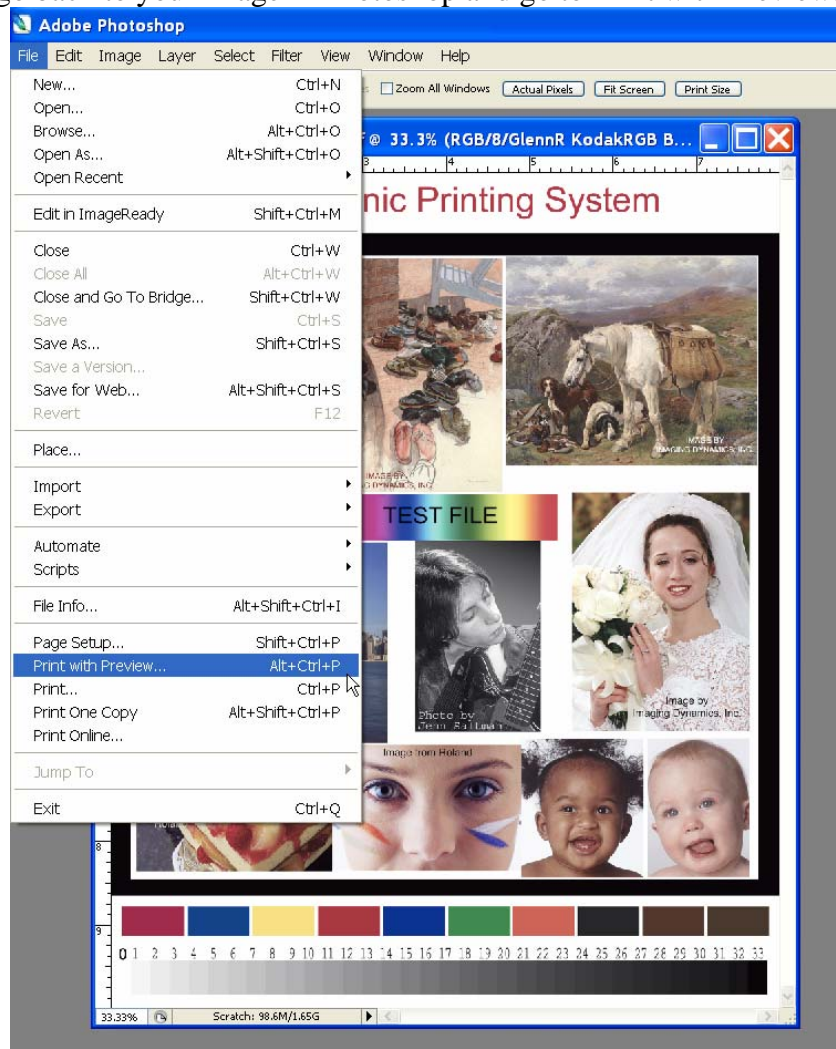
1. Right Click onto the profile that you make or receive to install it. It will go into the color folder of your Windows OS. For Mac, place it in the Colorsync folder.
2. Open Photoshop and go to View / Custom to choose the profile you want to print with.



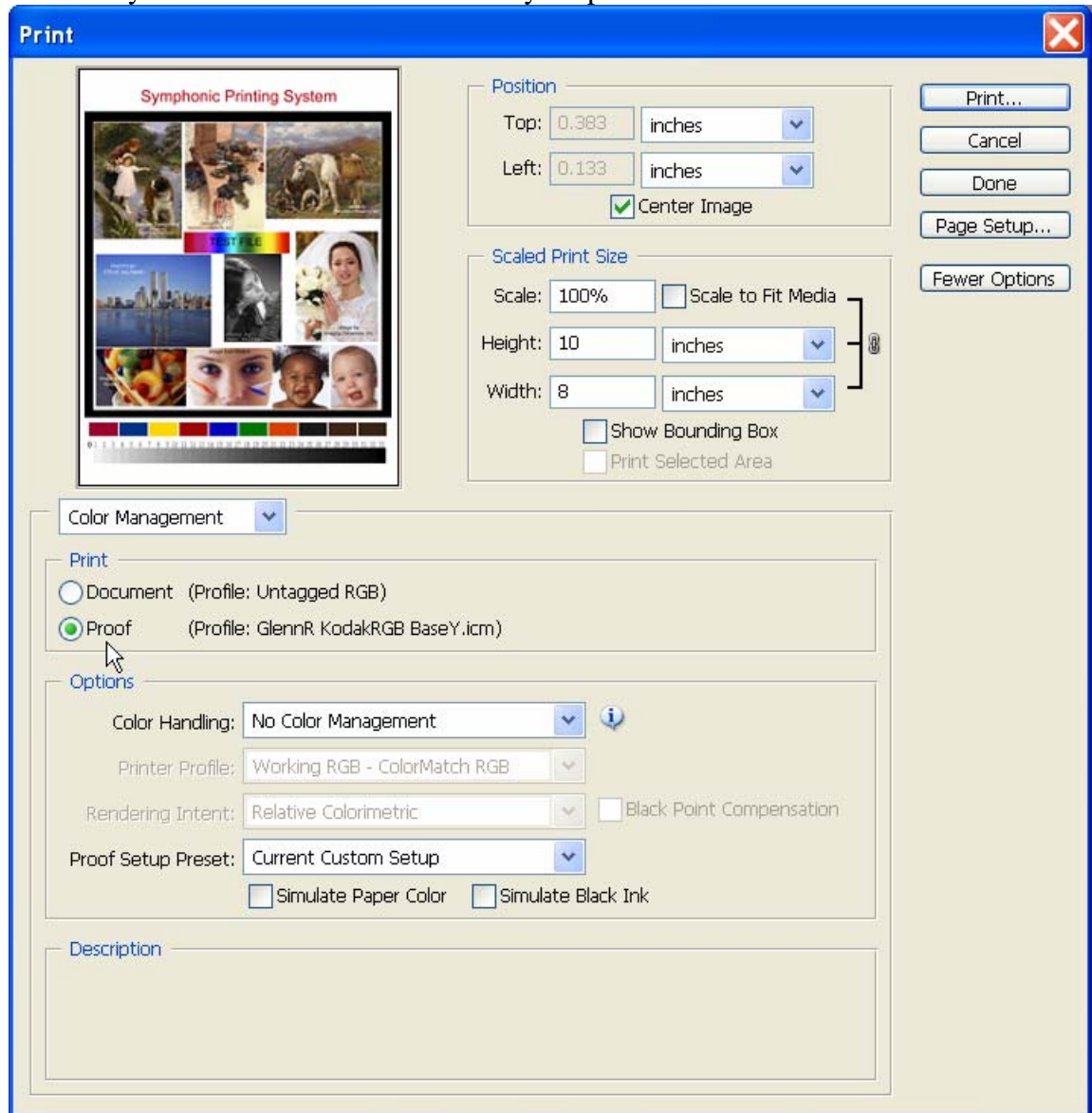
3. Locate the profile in the Device to Simulate box. Click OK. You must perform this action for each different paper you have profiled.



4. Now go back to your image in Photoshop and go to Print with Preview.



5. Click onto Proof and you will see your profile. In Color Handling choose No Color Management. Then you must go into Page Setup and choose the setup that made your Color Patches which made your profile.



6. Go to your printer Properties and go into Custom in Mode setup and choose your Configuration that you made. Now you are ready to print. You may have to reset the size of your print. Refer to Epson Manual.

